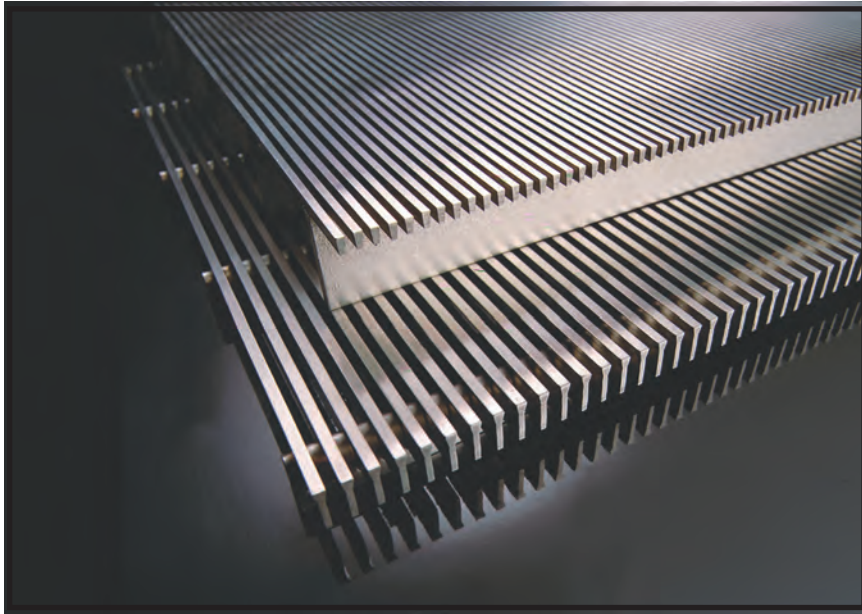


WEDGE TREAD

STAINLESS STEEL FLOOR GRATING, MATS & GRILLS MODEL HSC 100, HSC 58 AND HSC 38



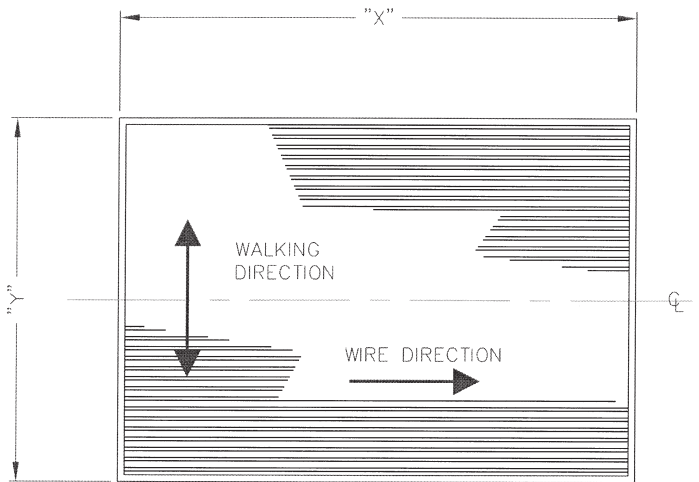
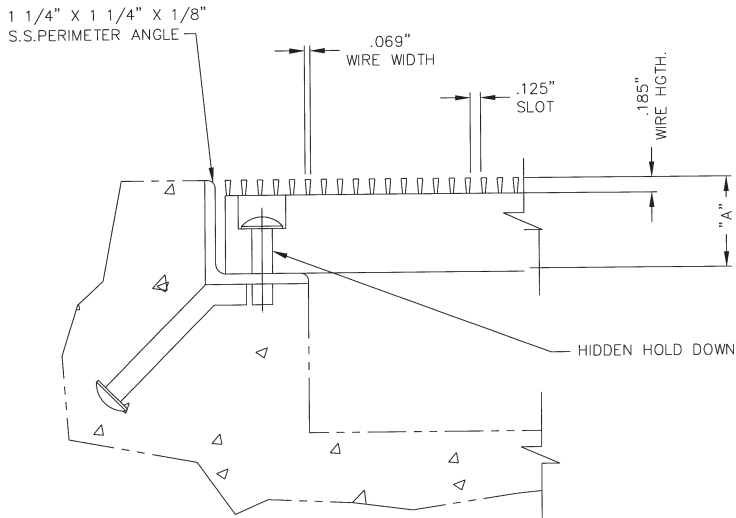
HENDRICK SCREEN INTRODUCES THE WEDGE TREAD LINE OF ENTRANCE MATS, AIR GRILLS, REVOLVING DOOR GRATING, DRAIN AND TRENCH GRATING

- Features:**
- Designed to carry 300# psf over a 3' span
 - Self cleaning features reduces maintenance
 - 64% open area provides very good air flow
 - Custom designs and colors available
 - 304 or 316L stainless steel

Specifications: Section 12484: HSC Model 100, 58 or 38 stainless steel floor grating as manufactured by Hendrick Screen Co., Owensboro, KY. (270) 685-5138 • Fax (270) 685-1729

Construction: Stainless steel resistance welded wire to support fins, wire spacing .125, wire size .069 x .185. Framing, pit liners and hold downs also available.

HSC 100, 58, 38 SS GRATING, SS SUBFRAME & HIDDEN LOCKDOWNS



	HSC 100	HSC 58	HSC 38
Screen Ht. "A" Dimension	1 1/8"	5/8"	3/8"
Wire	.069" x .185"	.069" x .185"	.069" x .185"
Support Fin	.070" x 1.00"	.070" x .5"	.118" x .196"
Wire Opening	.125"	.125"	.125"

ALSO AVAILABLE IN A WIDE VARIETY OF WIRE & SUPPORT SIZES

V-WIRE	▼	▼	▼	▼	▼	▼	▼	▼	▼	▼
	30V	47V	60V	69SV	69V	90SV	90V	125V	156V	187V
Width	.030	.047	.060	.069	.069	.090	.090	.125	.156	.187
Height	.080	.098	.100	.125	.185	.105	.150	.200	.275	.325

Note: Shape depictions not to scale.

*All measurements in inches unless otherwise noted.

SUPPORT ROD	▲	▲	▲	▲	●	↑	↑
	63H	L90Q	90Q	L130Q	Round	Fin	Fin
Width	.063	.090	.090	.118	.125 dia. .250 dia.	.070	.105
Height	.095	.125	.160	.197		.500 .750 1.000	.500 1.000

Note: Shape depictions not to scale.

*All measurements in inches unless otherwise noted.